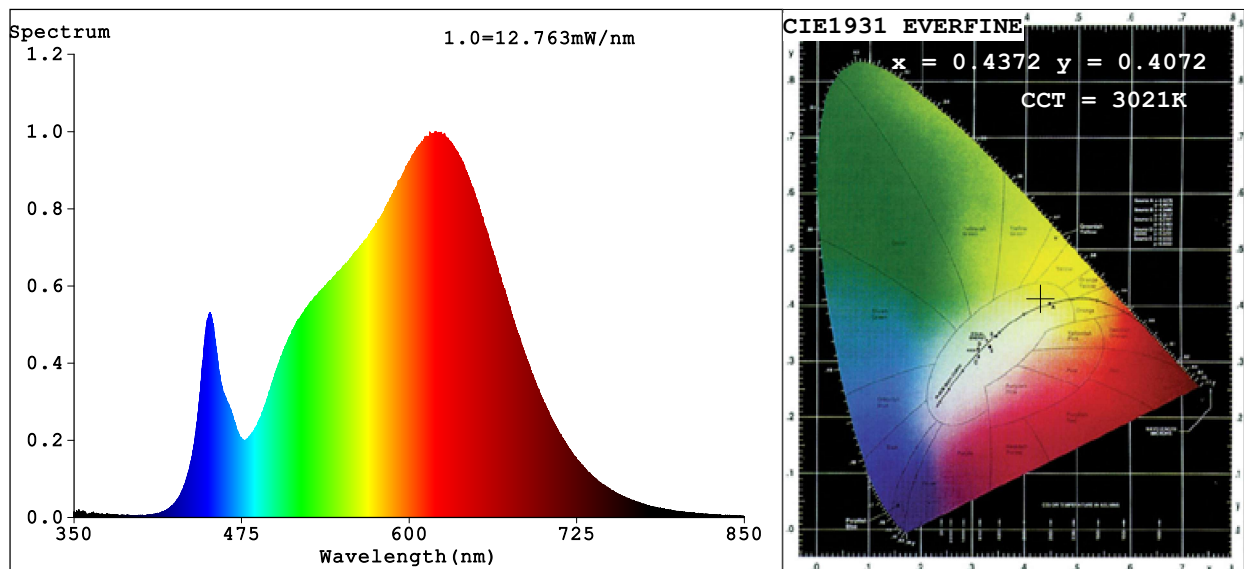


Spectrum Test Report



Color Parameters:

Chromaticity Coordinate: $x=0.4372$ $y=0.4072$ $u'=0.2494$ $v'=0.5227$
 CCT=3021K (Duv=0.0012) Dominant WL:Ld =582.3nm Purity=53.5%
 Ratio:R=24.1% G=73.2% B=2.7%; Peak WL:Lp=619.7nm FWHM=163.7nm
 Render Index:Ra=92.6 CRI=89.5 TM30:Rf=91 Rg=99
 R1 =93 R2 =95 R3 =97 R4 =94 R5 =92 R6 =94 R7 =93
 R8 =83 R9 =59 R10=88 R11=95 R12=79 R13=93 R14=97 R15=89

Photo Parameters:

Flux = 639.2 lm Eff. : 58.32 lm/W Fe = 2.187 W

Electrical parameters:

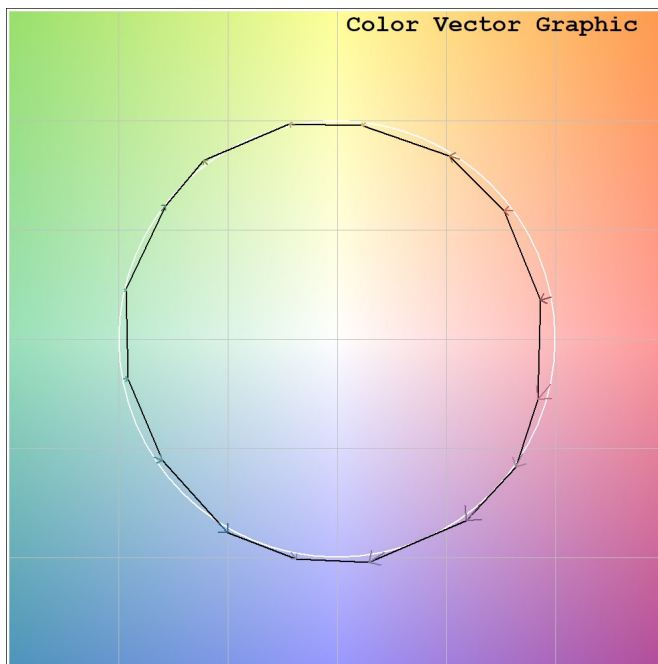
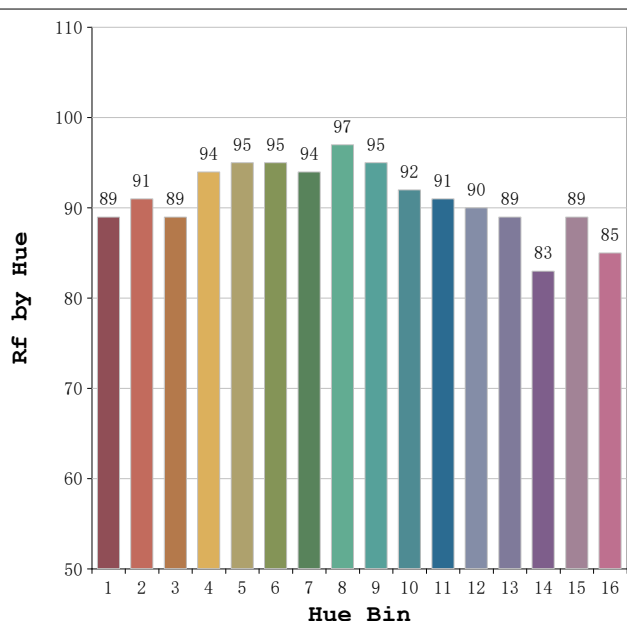
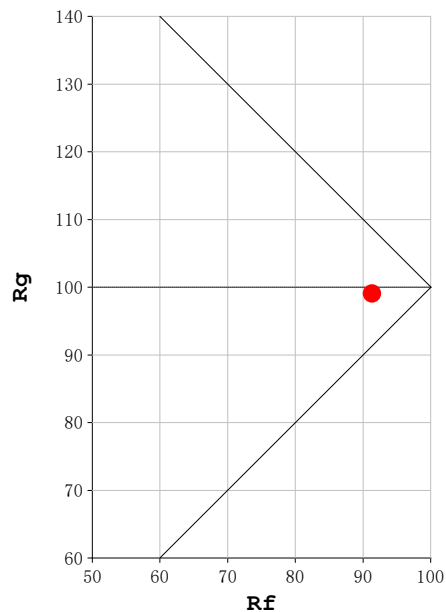
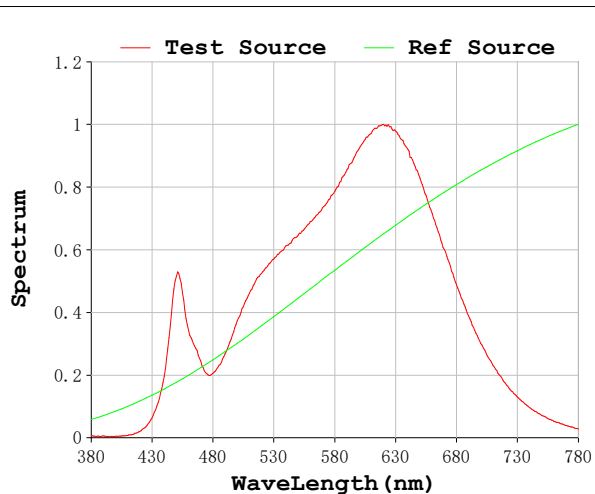
V = 220.10 V I = 0.05245 A P = 10.96 W PF = 0.9494

Status: Integral T = 1810 ms Ip = 42313 (65%)

Model:Focallis Axis 11w
 Tester:Sergio Carneros
 Temperature:25Deg
 Manufacturer:Luz Negra S.L

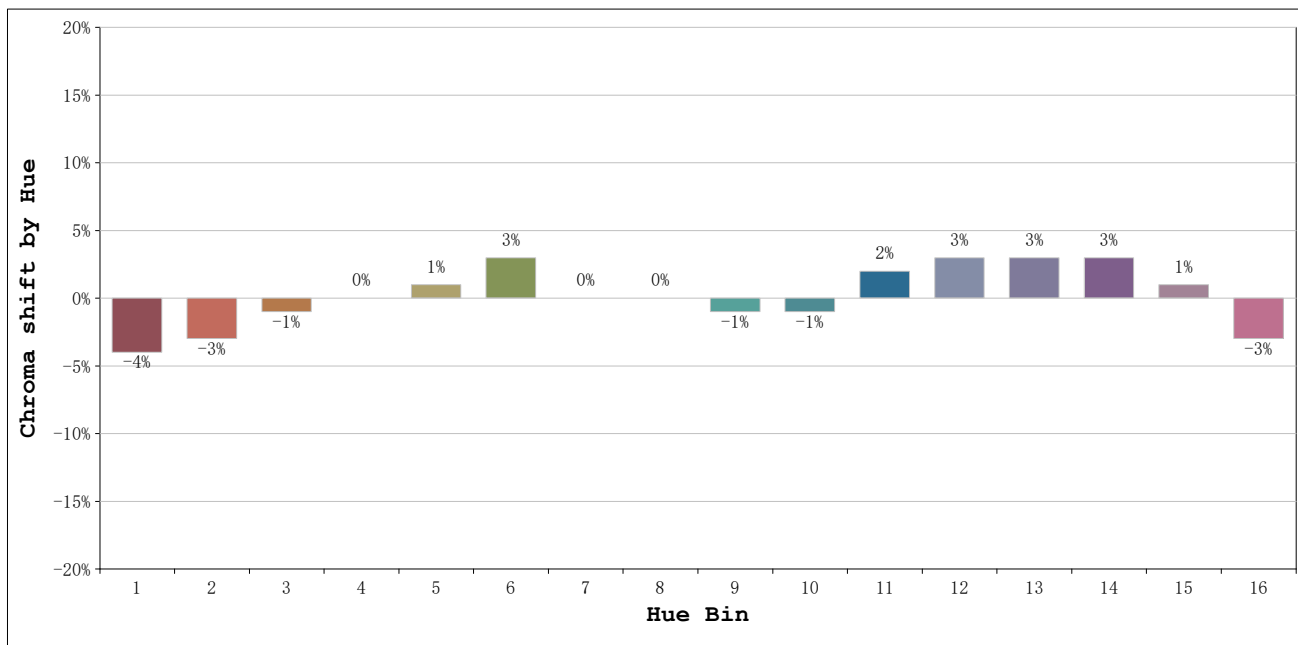
Number:3000K 18°
 Date:2026-06-03 12:04:53
 Humidity:57%
 Remarks:1 ud ref. blanco

Rf: 91 **CCT: 3021 K** **u': 0.2494**
Rg: 99 **Duv: 0.0012** **v': 0.5227**



Model:Focallis Axis 11w
 Tester:Sergio Carneros
 Temperature:25Deg
 Manufacturer:Luz Negra S.L

Number:3000K 18°
 Date:2026-06-03 12:04:53
 Humidity:57%
 Remarks:1 ud ref. blanco



			Graphic shift(%)	
Hue Bin	Hue Angle	Rf	Chroma	Hue
1	0.0° - 22.5°	89	-4	0
2	22.5° - 45.0°	91	-3	2
3	45.0° - 67.5°	89	-1	5
4	67.5° - 90.0°	94	0	2
5	90.0° - 112.5°	95	1	2
6	112.5° - 135.0°	95	3	1
7	135.0° - 157.5°	94	0	-2
8	157.5° - 180.0°	97	0	0
9	180.0° - 202.5°	95	-1	0
10	202.5° - 225.0°	92	-1	4
11	225.0° - 247.5°	91	2	6
12	247.5° - 270.0°	90	3	3
13	270.0° - 292.5°	89	3	-7
14	292.5° - 315.0°	83	3	-9
15	315.0° - 337.5°	89	1	-6
16	337.5° - 360.0°	85	-3	-7

Model:Focallis Axis 11w
 Tester:Sergio Carneros
 Temperature:25Deg
 Manufacturer:Luz Negra S.L

Number:3000K 18°
 Date:2026-06-03 12:04:53
 Humidity:57%
 Remarks:1 ud ref. blanco